



Setting up compost garden at Gowlidoddi Government School.



Implemented By: Move the Wheel Foundation



C Garden
a compost garden

UC Result Certificate

Financing results yousee.in development



This is to acknowledge the receipt of contribution from **Mr.** from , towards results generated by UC in projects providing services to poor communities. Details of the contribution are presented below.

| S No | Item | Detail |
|------|--|--|
| 1 | Certificate ID | UC-RC-2** |
| 2 | Contribution Area | Environment |
| 3 | Project Supported | Setting up composting unit Upper primary government school, Gowlidoddi , Hyderabad. Project Phase: Dec, 2011. Total Cost: INR. 5,435/- |
| 4 | Project Period | December, 2011 |
| 5 | Contribution to Project (A) | |
| 6 | Operations Grant to UC (B) | |
| 7 | Total Contribution (C)=(A)+(B) | |
| 8 | Date of Contribution | |
| 9 | Mode of Payment | |

Donations to United Care Development Services are exempted from Income Tax U/S 80G of IT Act. Approval granted through F.No. DIT (E)/HYD/80G/54(09)/10-11, dated 23-Mar-2011.

P. S. Gunaranjan
Founder, United Care Development Services (UC)

Contact: Mobile: +91-9-000-183-123; E-mail: gunaranjan@yousee.in ; Website: www.yousee.in



YouSee

www.yousee.in

United Care Development Services

(a not-for-profit company registered under section-25 of the Companies Act)

Dear

** -Feb-12

Sub: Acquisition of UC Result Certificate UC-RC- 1**

On this occasion, I wish to place my regards and thank you for choosing to acquire a UC Certificate. The Certificate serves as a record of your social investment and the document attached to this letter contains the details of the work undertaken and the social returns enabled through your contribution. Your contribution renews UC's commitment to apply further resources, including financial and intellectual, to alleviate and solve the inequities faced by the poor for accessing fundamental services like Education, Health and other livelihood services, without which their long term livelihood opportunities are at risk.

I also wish to convey UC's commitment to generate and deliver better rate of social returns for the contributions made by each of its customers. I take this opportunity to invite your feedback and suggestions in the following areas and more:

1. Improvements that you wish to see in the quality of reporting on financial data and intervention outcomes.
2. Additional areas of information that you would like to see added in future certificates.
3. Specific information on projects that you think UC should explore investing in.

This would help UC to live up to its values of Transparency, Innovation and Impact and to also deliver a higher rate of social returns to all those who are contributing to UC Certificates.

The contents of this document are intended to be open source and you are welcome to share the same with others.

P. S. Gunaranjan
Founder

Mobile: +91-9-000-183-123

E-mail: gunaranjan@yousee.in ; Website: www.yousee.in

Contents

| | |
|--|----|
| Introduction to Move the Wheel Foundation..... | 5 |
| Introduction to United Care Development Services | 6 |
| Financial Report..... | 7 |
| Details of Government School Supported by MTWF | 7 |
| Support provided by UC | 9 |
| Visits by UC Representative..... | 9 |
| Visual Tour | 10 |
| Conclusion | 11 |

Overview

Implementing Organization
Move The Wheel Foundation

LEGAL STATUS: Trust

YEAR OF INCEPTION:
January , 2010

STATE : Andhra Pradesh

AREAS OF WORK:
Education for children in underserved environments

SOURCE OF FUNDING :
Periodic Donors, Corporate Grants, Donations in Kind.

NUMBER OF EMPLOYEES
:
4 Member Board
7 Project Staff
5 Volunteers

Introduction to Move the Wheel Foundation

Move The Wheel Foundation (MTWF) is a Non-Profit Educational Trust, registered under the AP Trusts Act, in Jan 2010 (www.movethewheel.org) . MTWF aims at Enriching schooling experience and helping deserving schools impart Quality Holistic Education to its students to nurture balanced, resourceful, healthy, happy & responsible citizens. This is achieved by crafting the overall development of the school and concentrating on the development of the students.

The Approach:

OVERALL SCHOOL DEVELOPMENT

This is achieved by concentrating on the School Infrastructure development, increasing parental involvement in school activities and Staff guidance, training & motivation.

STUDENT DEVELOPMENT

For the student to be nurtured into a well-balanced citizen, school activities must be supported under Curricular, Co-curricular & Extra-Curricular activities that will span the Academic, Cultural, Social & Ecological aspects of education.

CURRICULUM SUPPORT ACTIVITIES:

Lesson based paper & multimedia support improves reading, writing, solving & comprehension skills and increase the Literacy Quotient.

CO-CURRICULAR ACTIVITIES:

Arts, Games, Moral Education & Quiz/Debates improve stamina, focus, fitness, general knowledge; develop character, critical thinking & social skills.

EXTRA-CURRICULAR ACTIVITIES:

Develop cultural & ecological awareness, important life skills like Collaboration, Expression, Communication, Creativity, Problem solving & Self- management, nurtures inherent talents, and inculcate values & attitudes like Rights & responsibilities, Commitment, Honesty & National Identity.

Overview

UNITED CARE
DEVELOPMENT SERVICES

LEGAL STATUS: Sec- 25
Not for Profit Company

YEAR OF INCEPTION:

June, 2009

**YEAR OF
INCORPORATION:**

February, 2010

SOURCE OF FUNDING:

Grant from Michael and Susan
Dell Foundation and PostPay
Donors

**NUMBER OF
EMPLOYEES:**

2 Member Full time staff.

AREAS OF WORK:

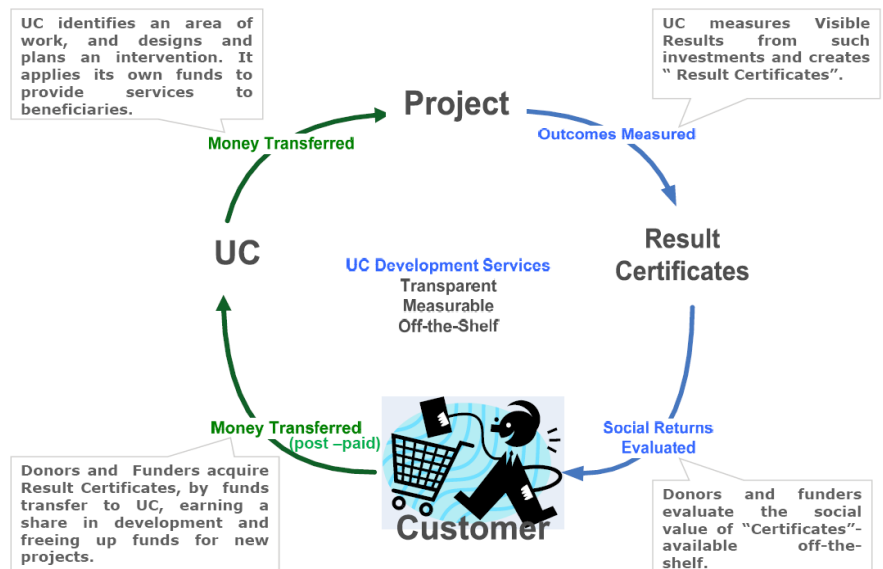
Health, Education,
Livelihoods and Environment

RECOGNITION:

In December 2009, UC was
Shortlisted in global
competition on “Marketplace
on Innovative Financial
Solutions for Development”
organized by World Bank.

Introduction to United Care Development Services

UC's model aims to improve the scale and efficiency of financing education, health and energy & environmental services for the very poor, through a result-based and post-paid model of funding. What this means is that UC applies its own funds to provide services to beneficiaries. UC then documents the work and presents the results from these projects as Result Certificates. Interested investors and donors are then invited to post-pay for results and acquire these Result Certificates. UC's objective is to generate greater Social Returns for philanthropic investments through this model.



The following links give more updates about UC's work and progress: Website: www.yousee.in

Updates: www.facebook.com/youseeupdates
www.twitter.com/youseeupdates

Movies: www.youtube.com/youseemovies
www.dailymotion.com/youseemovies

Presentations: www.slideshare.net/youseepresents

Financial Report

How the fund was spent by UC?

UC team has directly procured the raw material pertaining to this project and ensured implementation under direct supervision.

| S.No | Item | Cost (Rs) |
|------|---------------------------------------|--------------|
| 1 | Raw material (Bamboo, Bamboo sheets) | 2,570 |
| 2 | Cement Rings (6) | 1,200 |
| 3 | Hardware | 355 |
| 4 | Transportation | 300 |
| 5 | Manpower | 1,010 |
| | Total | 5,435 |

Details of Government School Supported by MTWF

MTWF has started supporting Government Upper Primary School in Gowlidoddi, Hyderabad since July 2010. Below table gives details of the number of students, both gender wise and class wise distribution.

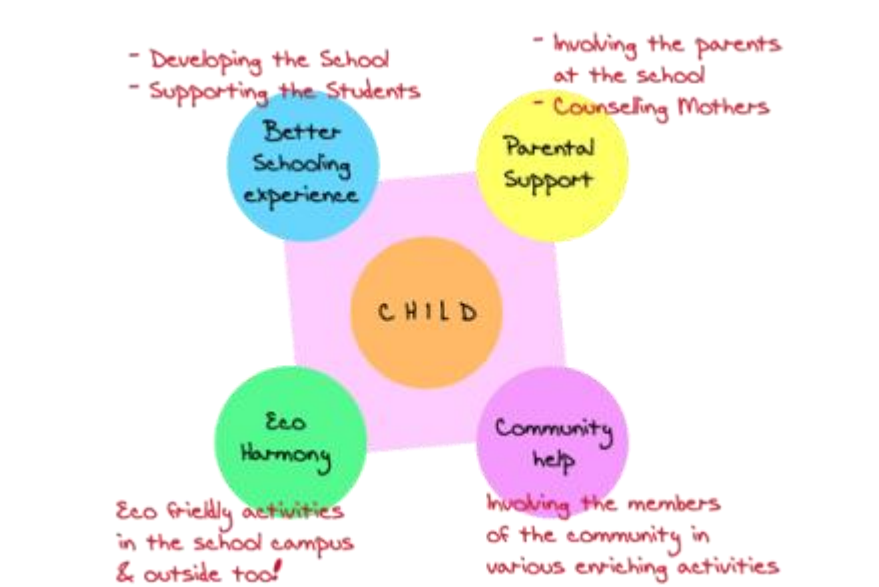
| Class | Boys | Girls | Total |
|--------------|------------|------------|------------|
| I | 25 | 17 | 42 |
| II A | 19 | 27 | 46 |
| II B | 21 | 24 | 45 |
| III | 29 | 26 | 55 |
| IV | 23 | 26 | 49 |
| V | 20 | 20 | 40 |
| VI | 15 | 14 | 29 |
| VII | 7 | 7 | 14 |
| Total | 159 | 161 | 320 |

Below table provides profile of this government school with regards to Resources and Infrastructure available.

| Infrastructure and Resource Profile of the School | | | |
|---|-----------------------------|---------|--|
| S.No | Infrastructure/ Resources | Details | Remarks |
| 1 | Number of class rooms | 8 | Provided by Government |
| 2 | Stage for Cultural programs | Yes | Provided by MTWF |
| 3 | Play Ground | Yes | |
| 4 | Number of Toilets | 3 | Only one is functional and 2 are dysfunctional |
| 5 | Staff Strength | 3 | |
| 6 | Vidya volunteers | 8 | MTWF support |
| 7 | Help for maintenance (Aaya) | 1 | MTWF support |

Below schematic provides information about the key focus areas MTWF team is trying to address in this school. MTWF aligns their activity plans in accordance with scope of key focus areas.

Areas of Focus



Support provided by UC

It can be noted from the above schematic that, MTWF emphasised on Environment related initiatives as part of their over all approach in developing the school.

Creating Awareness about Eco-friendly Waste management practices

It was observed that a significant amount of food waste was generated from school premises. This was resultant of Mid-day meals program run in the school, where in students are provided with nutritional supplements. Lot of organic waste was generated from school kitchen on a daily basis and significant amount of food was also wasted. Littered kitchen and food waste resulted in unhygienic environment in the school premises. UC team suggested to implement composting process which will then turn the organic waste into compost. In the month of December with the help of MTWF team and students , UC team had set up composting facility called C-garden. This was not only meant to serve the waste management practices but also is meant to act as ongoing environmental sciences project for school students. Along with Aaya, students from class 5 and 6 now participate on daily basis to stir the waste and maintain the facility. In the second week of January, 2012, this initiative was published in the regional edition of Telugu News daily called “ Saakshi”. Outcomes pertaining to this project are documented and will be presented as separate UC result certificate.

Students along with school administration are now diligently segregating dry waste generated. This dry waste, primarily comprising of paper waste, is being now donated to UC lead initiative called “Do Not waste, Donate your waste”. First batch of compost is expected be ready during the month of April, 2012.

Visits by UC Representative

UC team have been constantly engaging with MTWF team since July 2011 and had made several visits to the school since then. Specifically with regards to this project, UC team personally supervised and was present for 3 days from 11-13th Dec, 2012. UC team has also made several visits in the months Jan and February, 2012. Team was happy to note the maintenance of this facility and progress of the composting process.

Visual Tour



C Garden

a compost garden

← Composting facility set up by UC team at the school.



Staff and Students enthusiastically participating in the running of this facility.

13-Dec-11



Items (left to right) gathered for composting on Day-1, :

1. Dry leaves from the School ground
2. Food left over by children
3. Vegetable peels from School Kitchen
4. Food spill-overs swept from the floor.
5. Some egg shells.



Conclusion

This project is an important milestone with regards to UC's initiative in over wall waste management. UC is now working towards to setting up cost effective organic waste composting set up in gated communities. In this regard it has commenced its work in gated community named HillRdige springs in Gachbowli. Some of the UC volunteers have also committed to supervise the maintenance of these centres on periodic basis.